

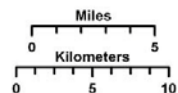
Rhode Island Ocean Special Area Management Plan (SAMP)

Map Key

- Proposed Ocean Study Area
- State/Federal Waters Separation

TDI - No Geology

- 1.0
- 1.1
- 1.2
- 1.3
- 1.4
- 1.5
- 1.6
- 1.7
- 1.8
- 1.9
- 2.0
- 2.1



Coordinate System:

Projection: RI Stateplane

Units: Feet

FIPS Zone: 3800

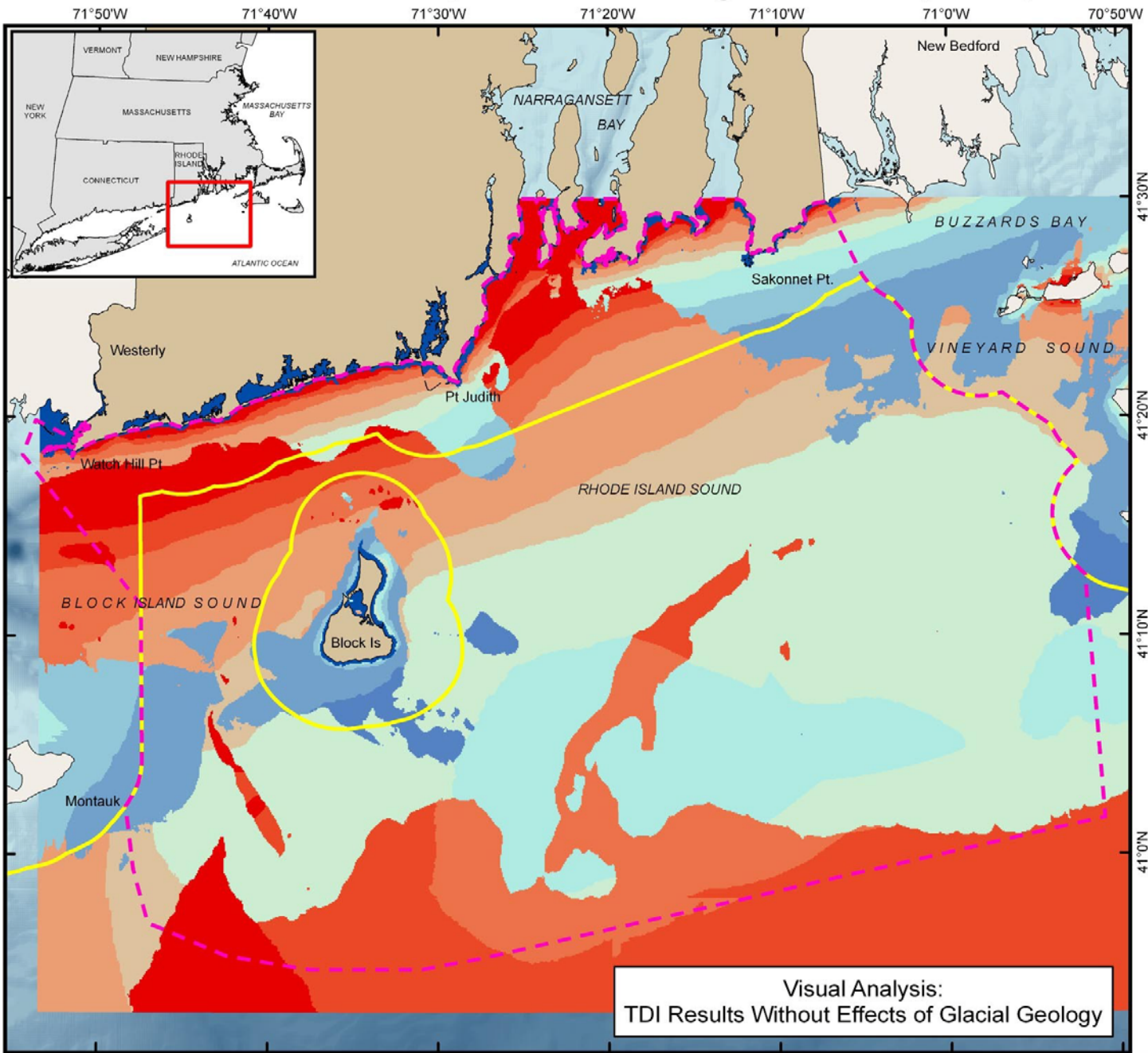
Datum: NAD83

For Project Background Information:

<http://seagrant.gso.uri.edu/oceansamp>

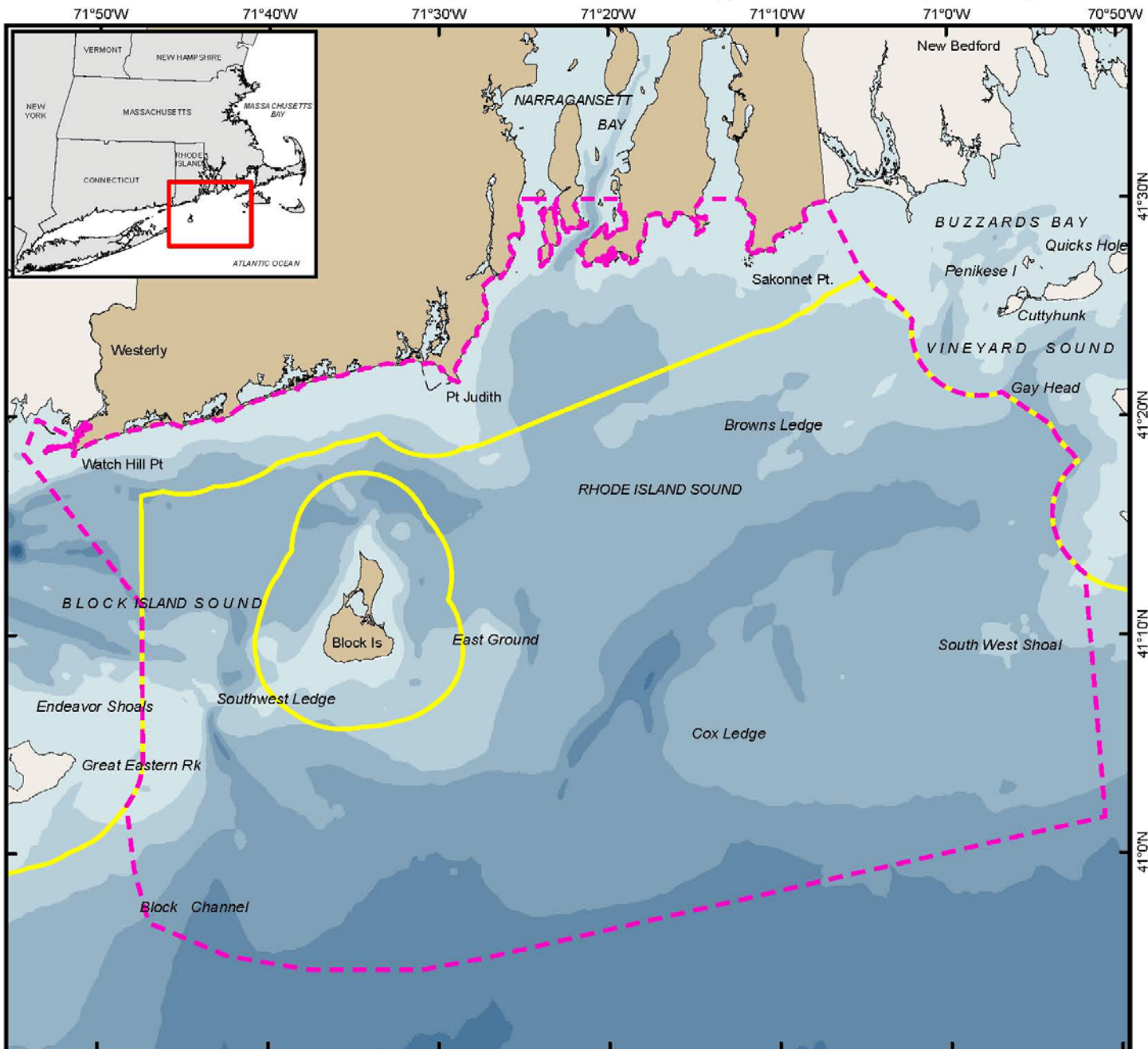
For Project Map and Data Products:

http://www.narrbay.org/d_projects/oceansamp

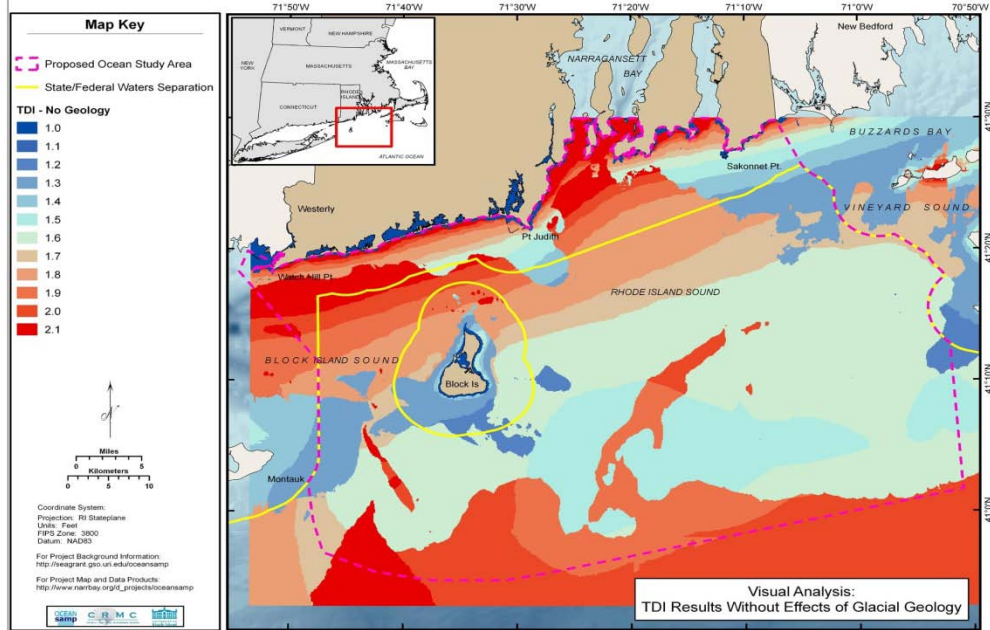


Visual Analysis:
TDI Results Without Effects of Glacial Geology

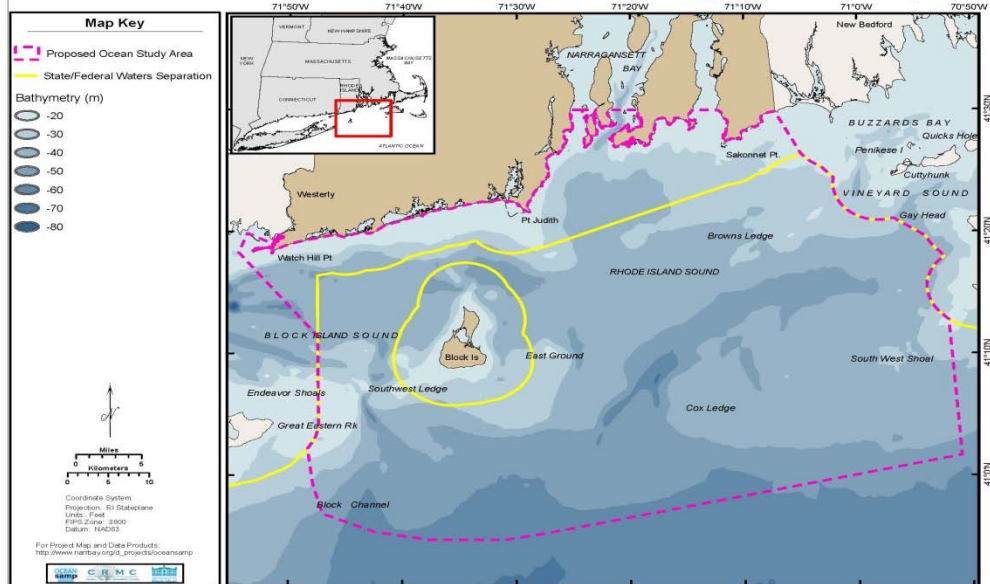
Rhode Island Ocean Special Area Management Plan (SAMP)



Rhode Island Ocean Special Area Management Plan (SAMP)



Rhode Island Ocean Special Area Management Plan (SAMP)



Rhode Island Ocean Special Area Management Plan (SAMP)

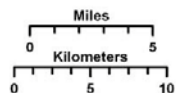
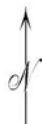
71°50'W 71°40'W 71°30'W 71°20'W 71°10'W 71°0'W 70°50'W

Map Key

- Proposed Ocean Study Area
- State/Federal Waters Separation

TDI - With Geology

- 1.00
- 1.25
- 1.50
- 1.75
- 2.00
- 2.25
- 2.50
- 2.75
- 3.00
- 3.25
- 3.50



Coordinate System:

Projection: RI Stateplane

Units: Feet

FIPS Zone: 3800

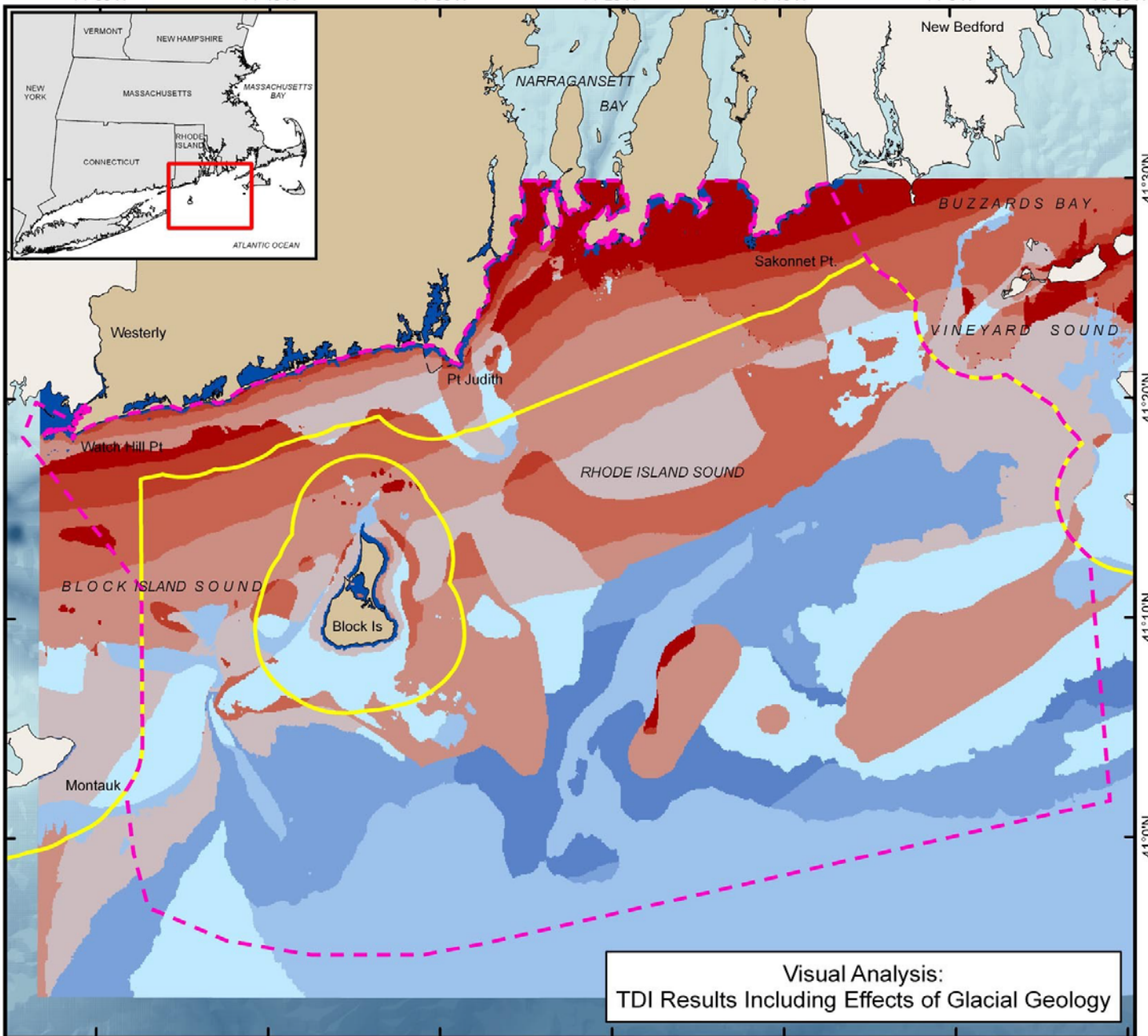
Datum: NAD83

For Project Background Information:

<http://seagrant.gso.uri.edu/oceansamp>

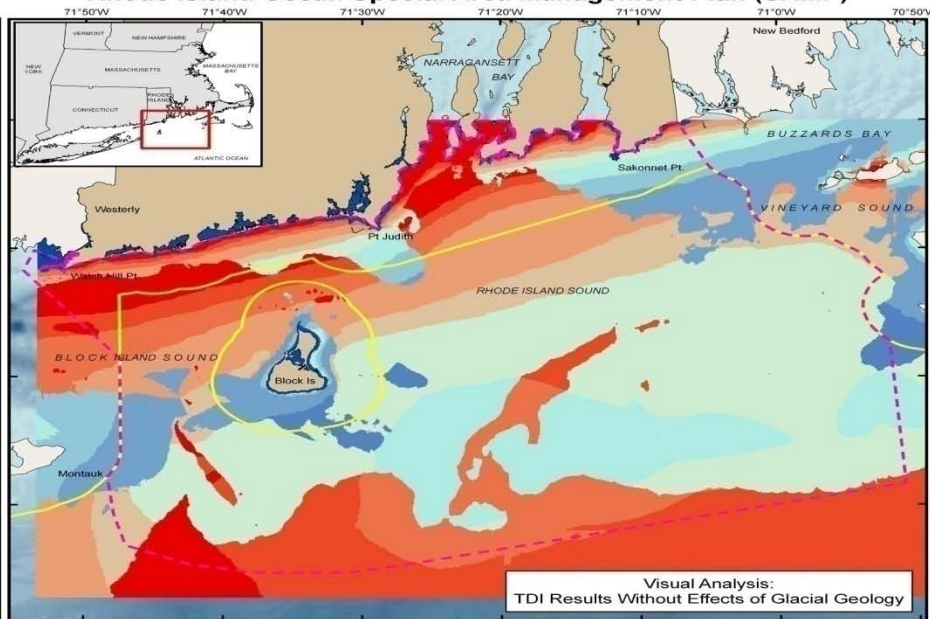
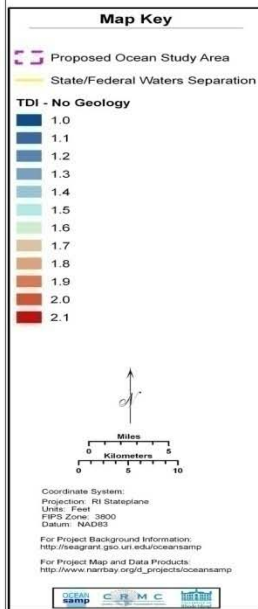
For Project Map and Data Products:

http://www.narrbay.org/d_projects/oceansamp

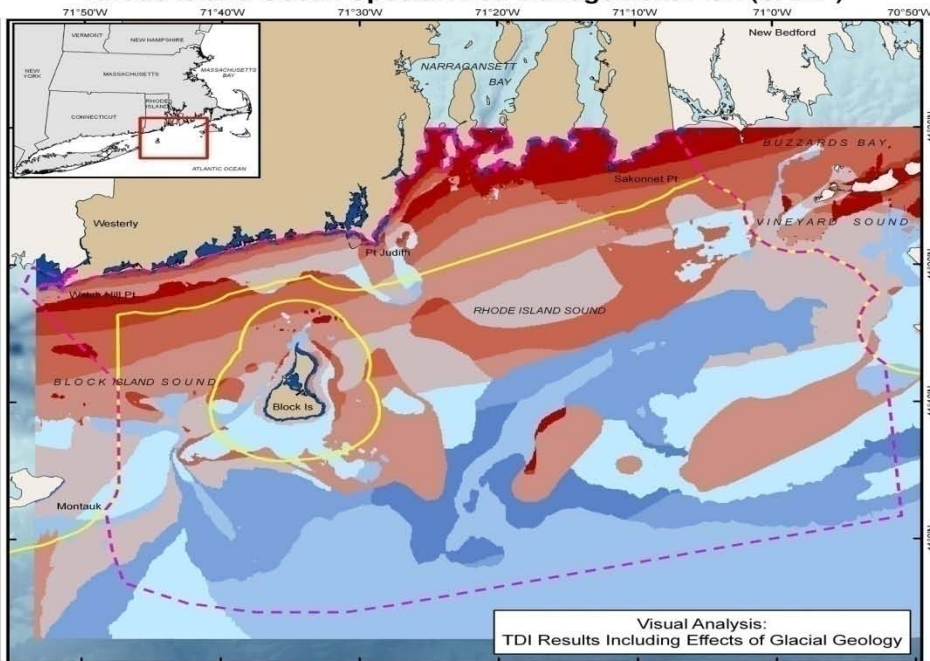
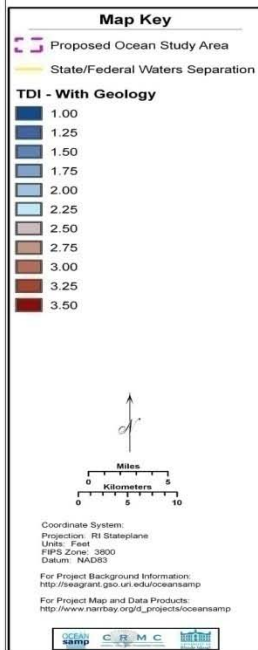


Visual Analysis:
TDI Results Including Effects of Glacial Geology

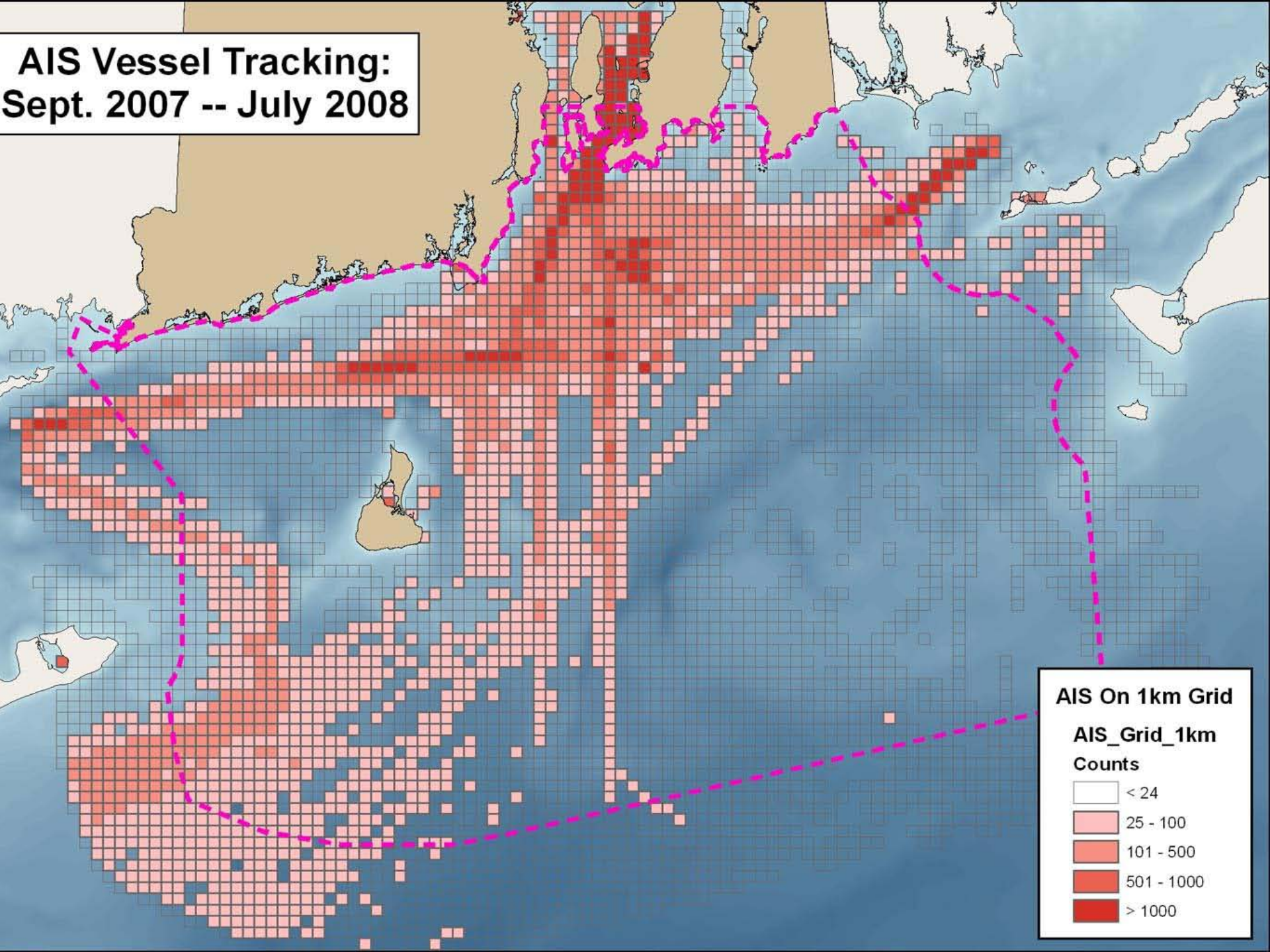
Rhode Island Ocean Special Area Management Plan (SAMP)



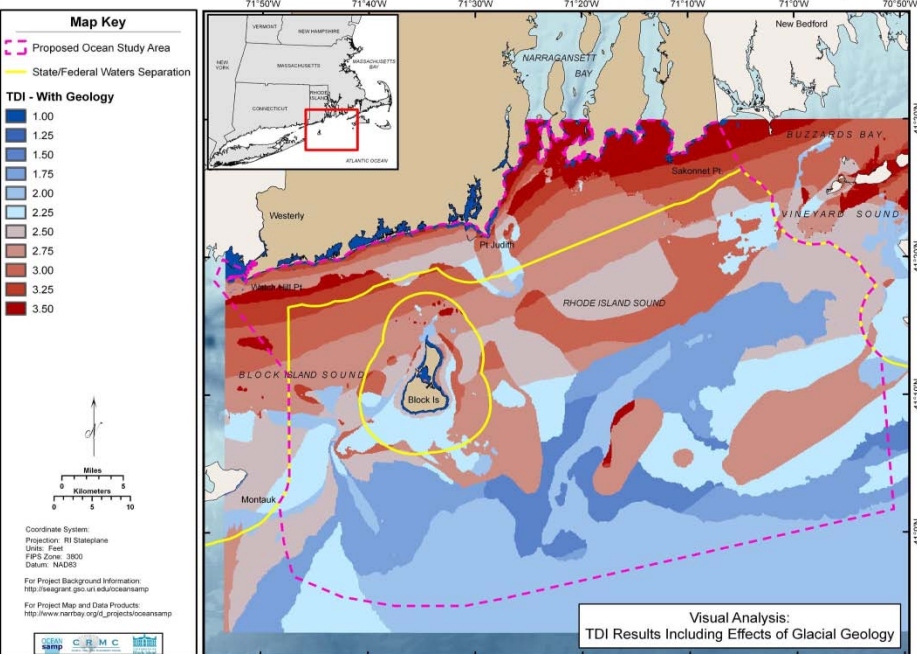
Rhode Island Ocean Special Area Management Plan (SAMP)



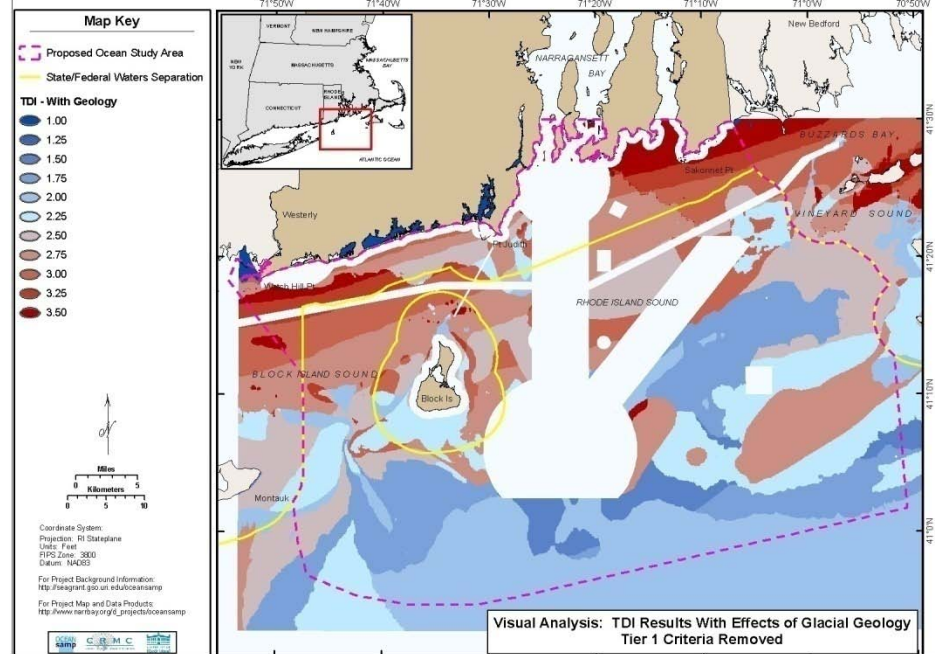
AIS Vessel Tracking: Sept. 2007 -- July 2008



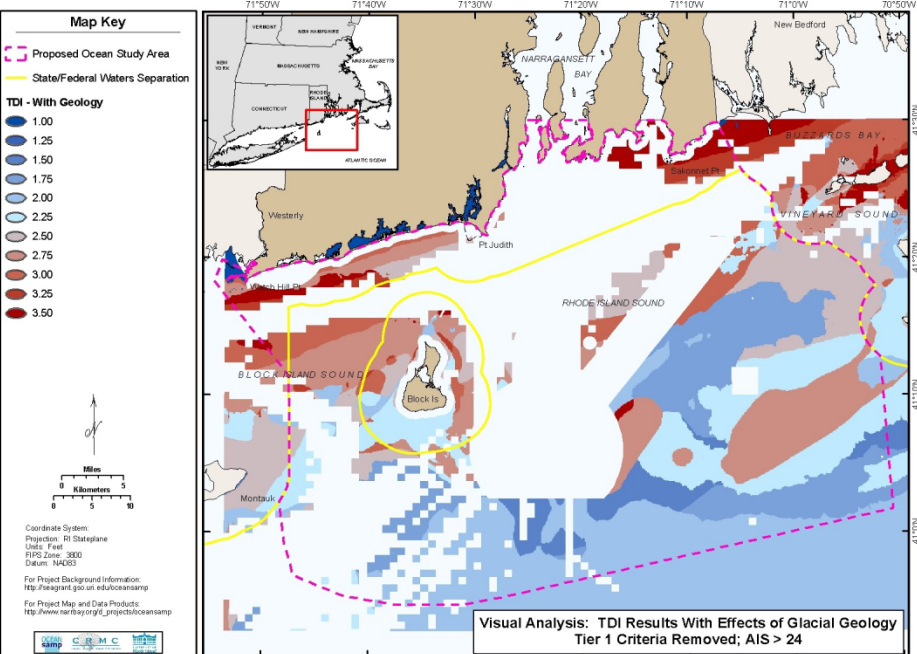
Rhode Island Ocean Special Area Management Plan (SAMP)



Rhode Island Ocean Special Area Management Plan (SAMP)

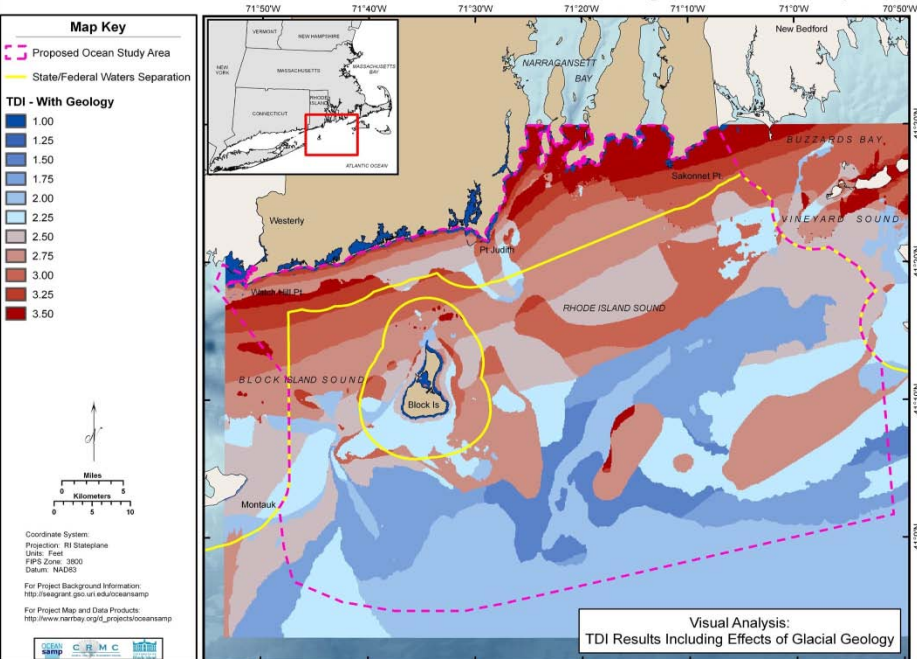


Rhode Island Ocean Special Area Management Plan (SAMP)

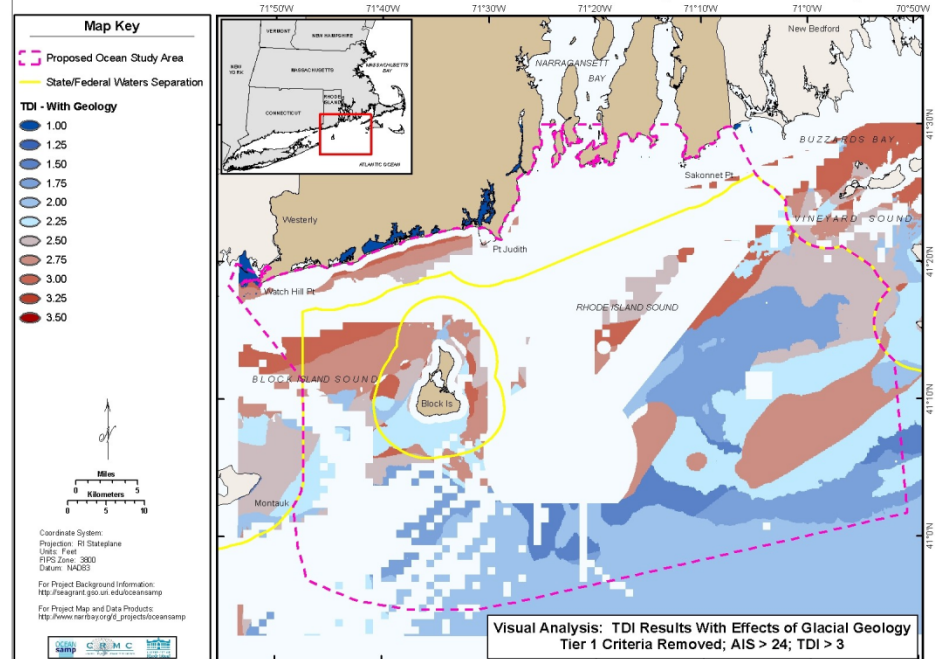


AIS SERIES

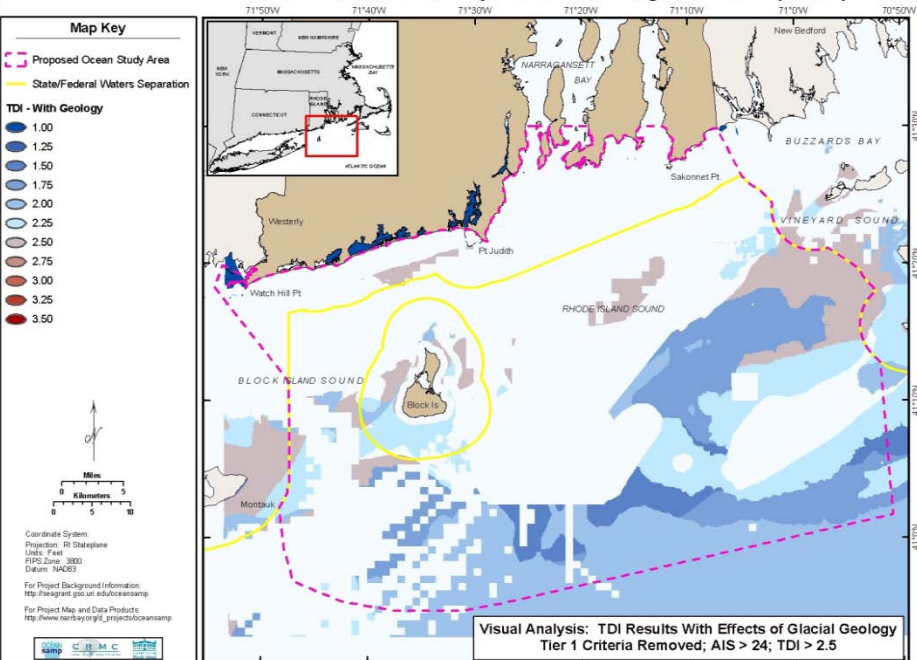
Rhode Island Ocean Special Area Management Plan (SAMP)



Rhode Island Ocean Special Area Management Plan (SAMP)

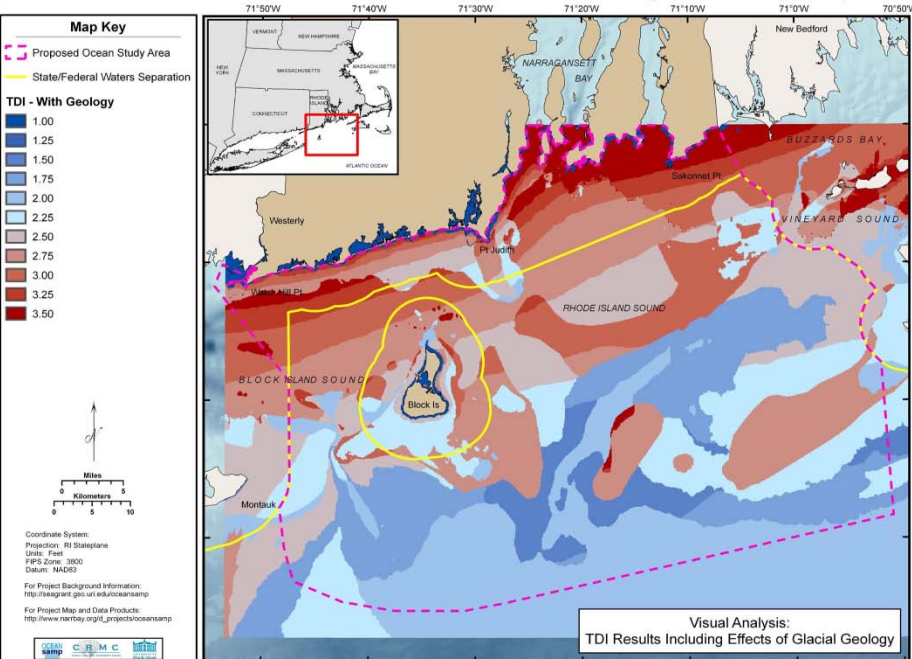


Rhode Island Ocean Special Area Management Plan (SAMP)

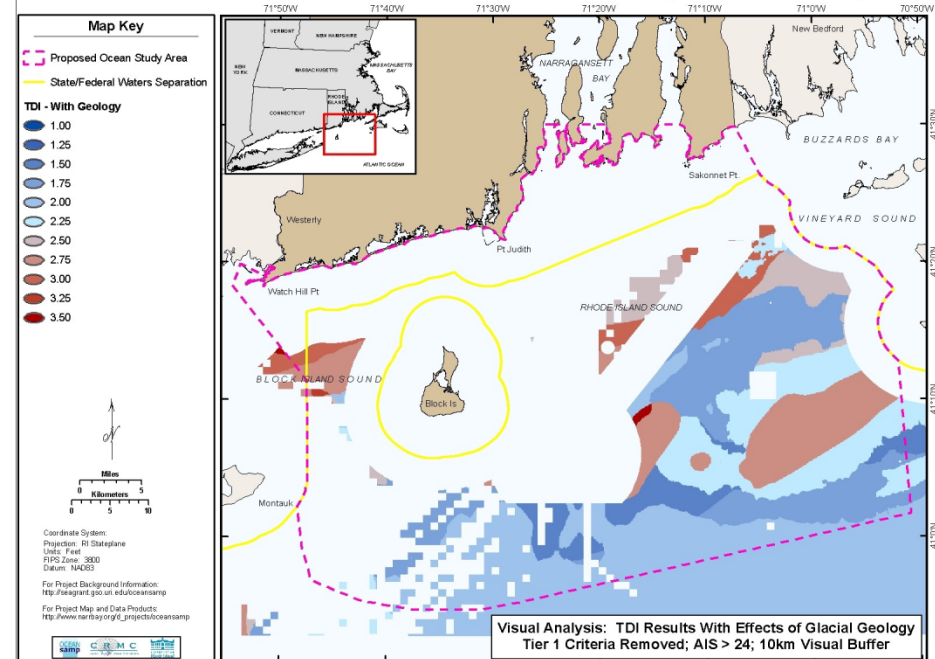


TDI Series

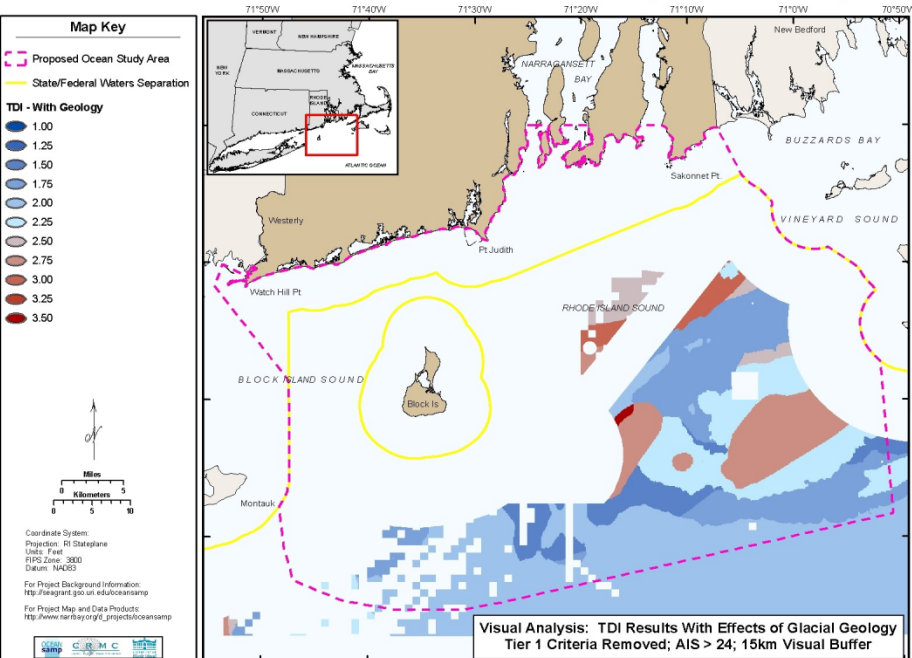
Rhode Island Ocean Special Area Management Plan (SAMP)



Rhode Island Ocean Special Area Management Plan (SAMP)



Rhode Island Ocean Special Area Management Plan (SAMP)



Visualization Series

Conclusions

- TDI analysis useful in identifying possible sites for offshore wind energy development. Both methods give consistent results; site locations are balance between wind energy resource and technical development challenge.
- Useful to identify sites for more in-depth analysis
- Principal data needed at this step in analysis, sub-bottom geology

Next Steps

- Perform Tier #2 analysis

Use conflicts

Commercial and recreational fishing

Recreational boating

Existing licenses (leases)

Aggregate extraction

Conservation

Aquaculture

Next Steps (Cont'd)

Tier # 2 Screening

Environmental Impact

Birds

Fish and fish habitat

Marine mammals and turtles

Water and air quality

Historical and cultural resources